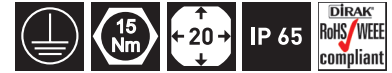


7-080.01 Quarter-Turn Pr20.1 L18

Tool operable, IP65, Stainless Steel, Optional pre-assembly

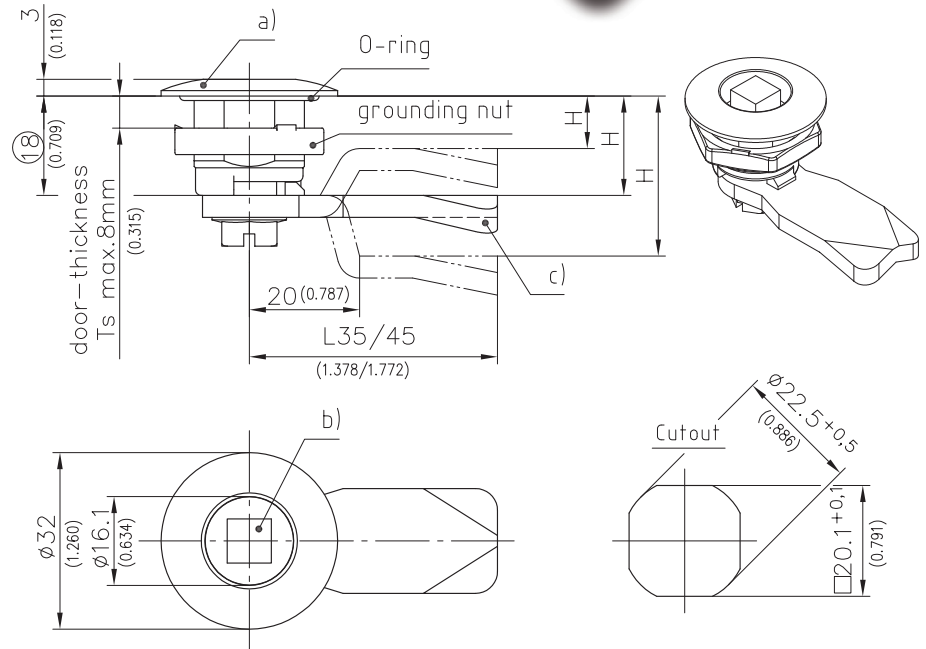


Product Notes:

- RH and LH application
- Water and dust tight according to IP65, DIN EN 60529
- Quarter-Turn consists of three components which are combined to fit application
- On request parts can be assembled
- Pre-assembled Quarter-Turn can be installed in cutout
- Grounding achieved with grounding nut
- Low profile
- Screw-on installation - see Product System 1-100 and 1-100.01
- Tool-less installation - see Product System 1-082SL and 1-083SL
- Other stainless steel - see Product System 7-080

Material:

- **Housing, grounding nut and insert:** Stainless Steel AISI 316L
- **Cams and serrated screw:** Stainless Steel AISI 304
- **O-Rings:** NBR



a) Housing with single sided grounding nut and O-Ring	See Page
AISI 316L	100-9601
b) Insert with screw, wave washer and O-ring	
Square 6mm	200-9146
Square 7mm	200-9119
Square 8mm	200-9120
Triangular 7mm	200-9121
Triangular 8mm	200-9122
Double bit 3mm	200-9123
Double bit 5mm	200-9124
Slotted 2x4mm deep	200-9151
Star knob with Stainless Steel core/insert with PA knob	200-9125
Wing knob with Stainless Steel core/insert with PA knob	200-9179
7/16" hex.	200-9192
Socket hex. 8 mm (5/16")	200-9195
Socket hex. 8 mm (5/16"), with pin	100-9118
e1) Key for insert	10.18

c) Cams	
L45mm/1.772	
H - mm / inch	
6 / 0.236	200-0506
8 / 0.315	200-0508
10 / 0.394	200-0510
14 / 0.551	200-0514
16 / 0.630	200-0516
18 / 0.709	200-0518
20 / 0.787	200-0520
22 / 0.866	200-0522
24 / 0.945	200-0524
26 / 1.024	200-0526
28 / 1.102	200-0528
32 / 1.260	200-0532
50 / 1.969	200-0550
c1) Cams	
L35mm/1.378	
H in mm / inch	
20 / 0.787	200-4535.00-00020
22 / 0.866	200-4535.00-00022
d) Assembling of cam, with O-ring	200-0002